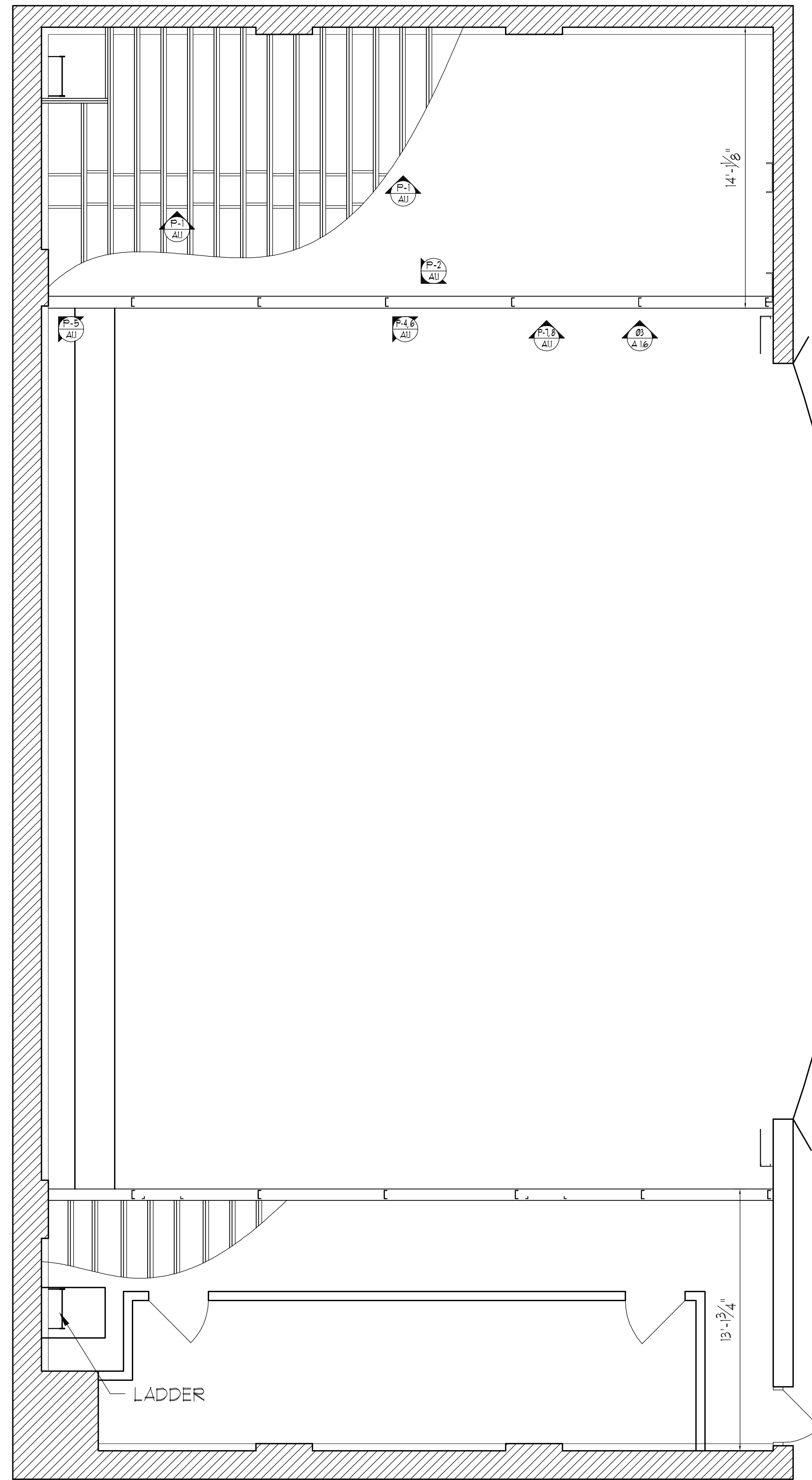


01 STAGE PLAN  
SCALE: 1/4"=1'0"



02 FIRST GALLERY  
SCALE: 1/4"=1'0"



PICTURE 1  
STAGE LEFT FIRST GALLERY FRAMING TO HISTORIC WALL CONNECTION. NOTE THE HISTORIC AND THE NEW MEMBERS.



PICTURE 3  
STAGE LEFT FIRST GALLERY FRAMING WITH THE 2X8 NEW BRIDGING. FIRST LINE OF BRIDGING IS APPROX. 4'-5" AWAY FROM THE EDGE OF I-BEAM AND THE SECOND LINE 18" AWAY FROM THE FIRST.



PICTURE 5  
STAGE LEFT FIRST GALLERY I-BEAM TO HISTORIC LOAD BEARING BRICK WALL CONNECTION. NOTE THE NEW CONCRETE AT THE CONNECTION.



PICTURE 7  
STAGE LEFT FIRST GALLERY TOP VIEW OF PIN RAIL MEMBER TO I-BEAM CONNECTION



PICTURE 2  
STAGE LEFT FIRST GALLERY FRAMING TO NEW STEEL CONNECTION.



PICTURE 4  
STAGE LEFT FIRST GALLERY PIN RAIL. SEE DETAILS ON A 13.



PICTURE 6  
STAGE LEFT FIRST GALLERY I-BEAM



PICTURE 8  
STAGE LEFT FIRST GALLERY SIDE VIEW OF PIN RAIL MEMBER TO I-BEAM CONNECTION

FIELD DOCUMENTATION OF "AS-IS" CONDITIONS NOT FOR CONSTRUCTION

THE GRAND 1894 OPERA HOUSE  
STAGE REMODELING

2020 POST OFFICE STREET  
GALVESTON ISLAND, TEXAS 77550

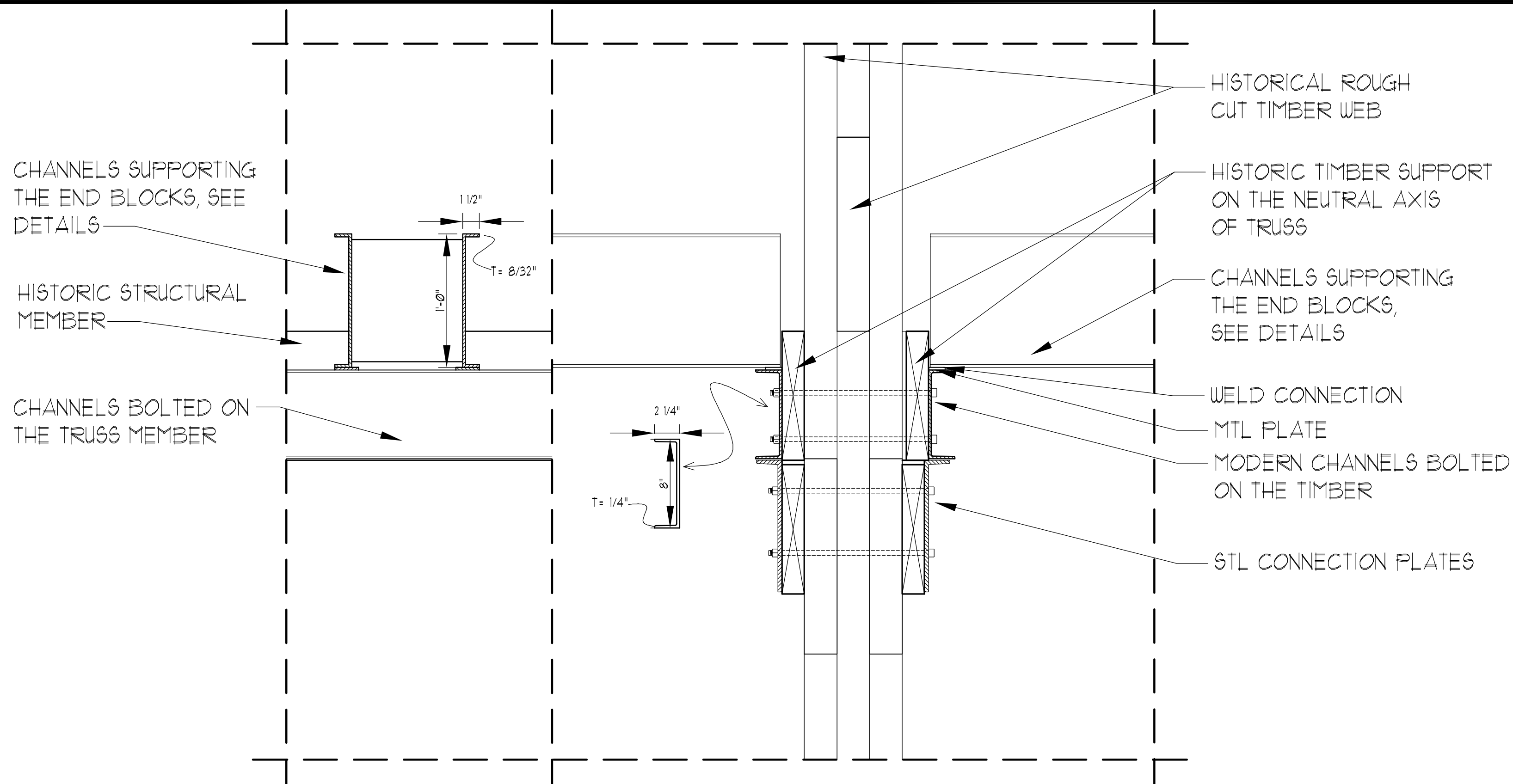
DATE  
MARCH 07, 2005  
DRAWN BY  
MVA, FB  
CHECKED BY  
KPA  
PROJECT NUMBER  
05-09

A1.1

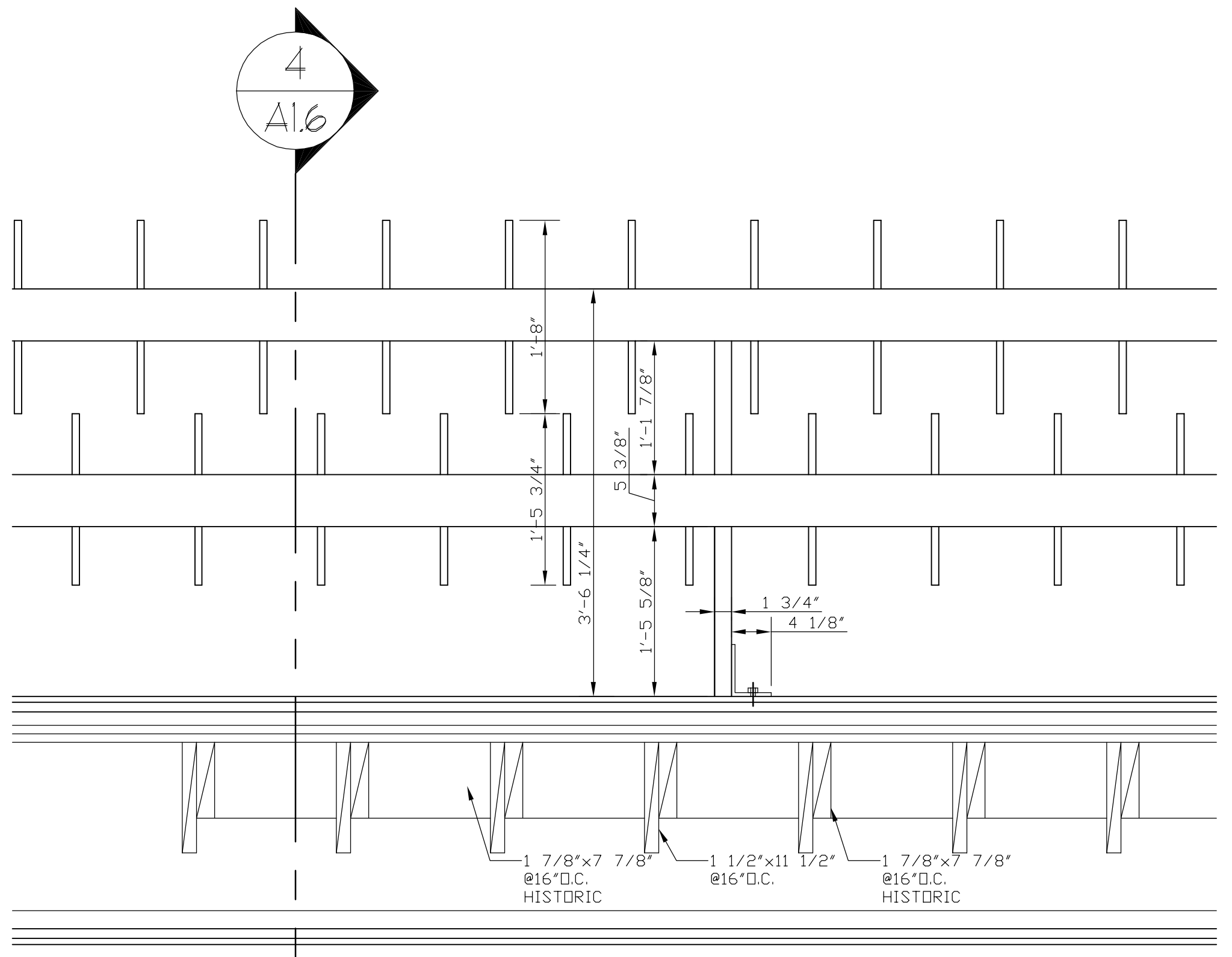
SHEET OF

KILLIS ALMOND & ASSOCIATES  
Architecture Historic Preservation Planning  
342 WILKENS, SAN ANTONIO, TEXAS 78210  
(210) 532-3212 FAX (210) 532-9919

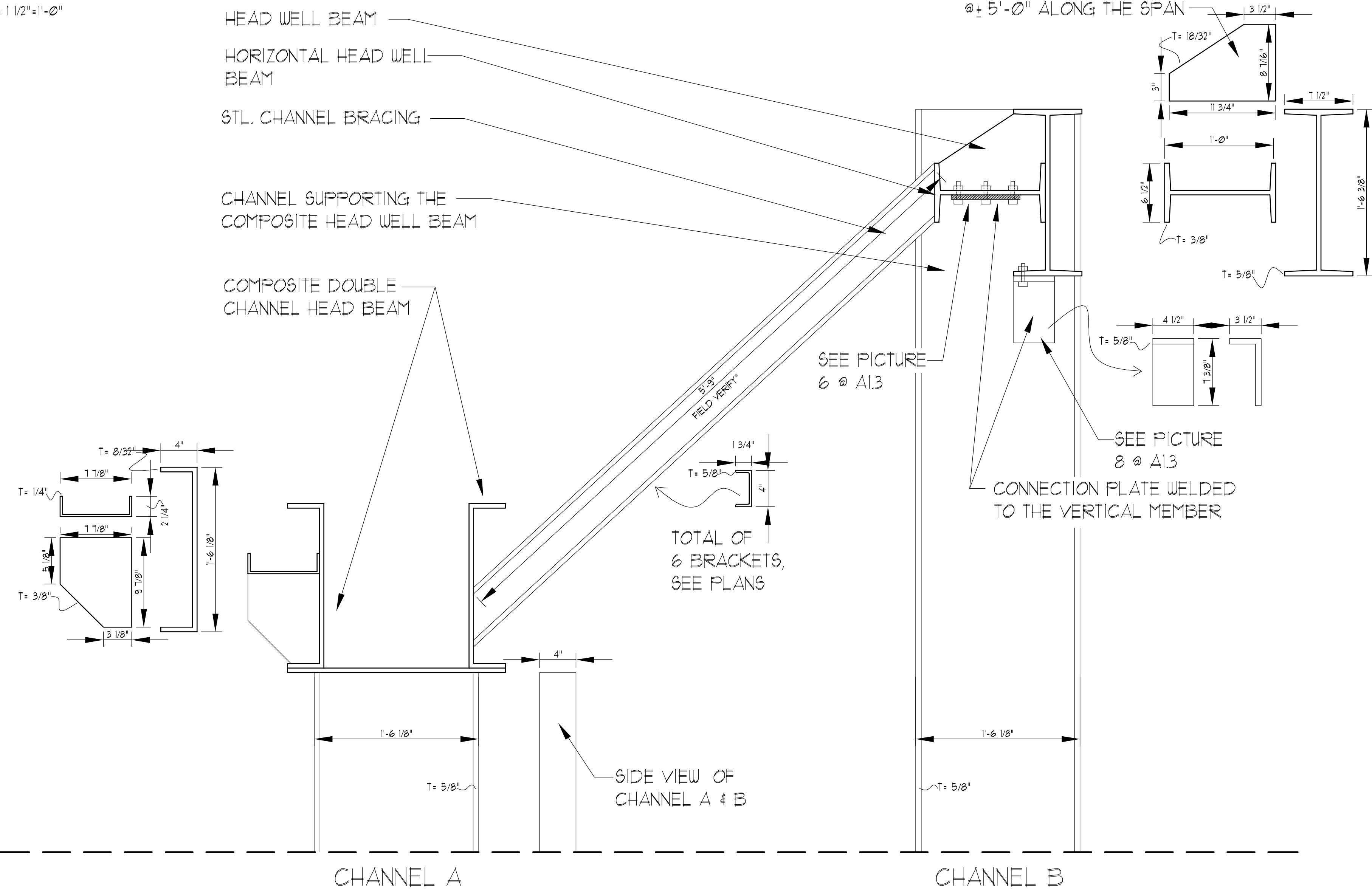




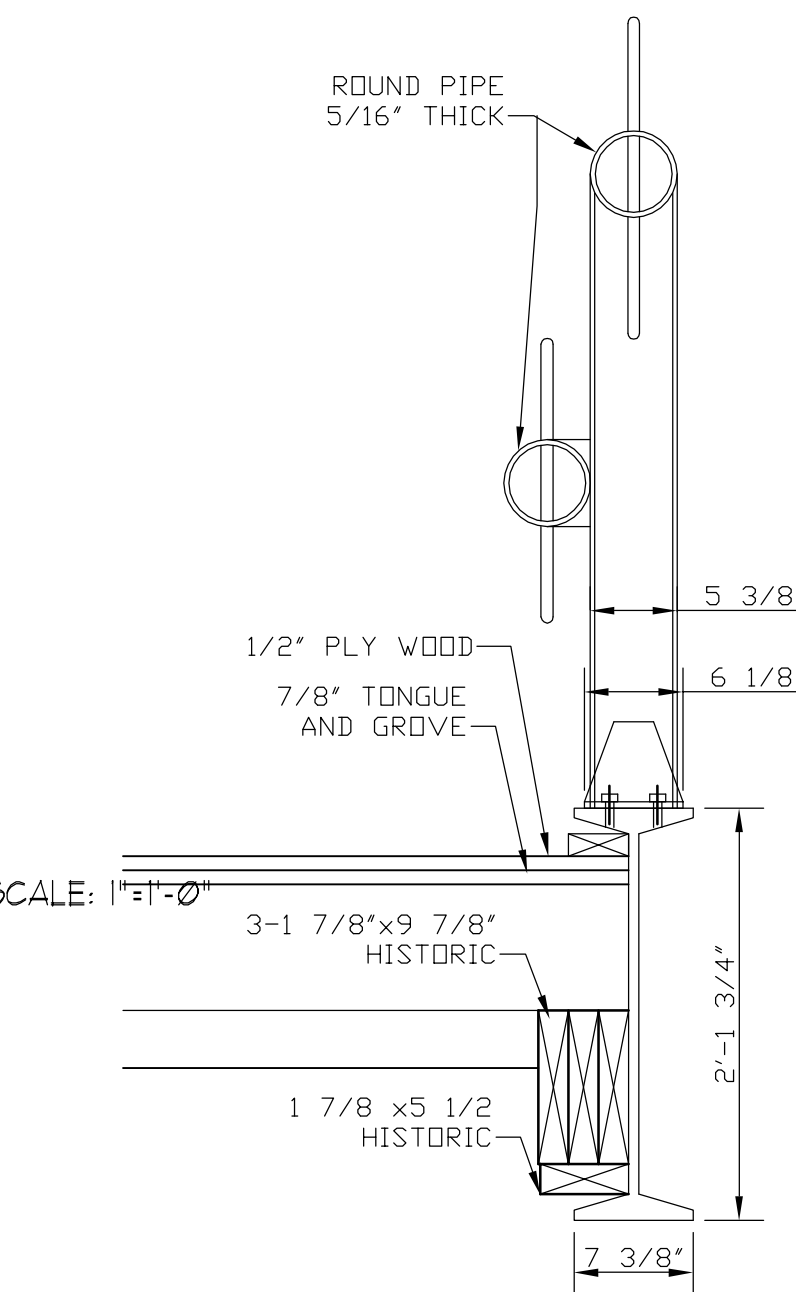
Ø1 STAGE RIGHT  
SCALE: 1 1/2"=1'-0"



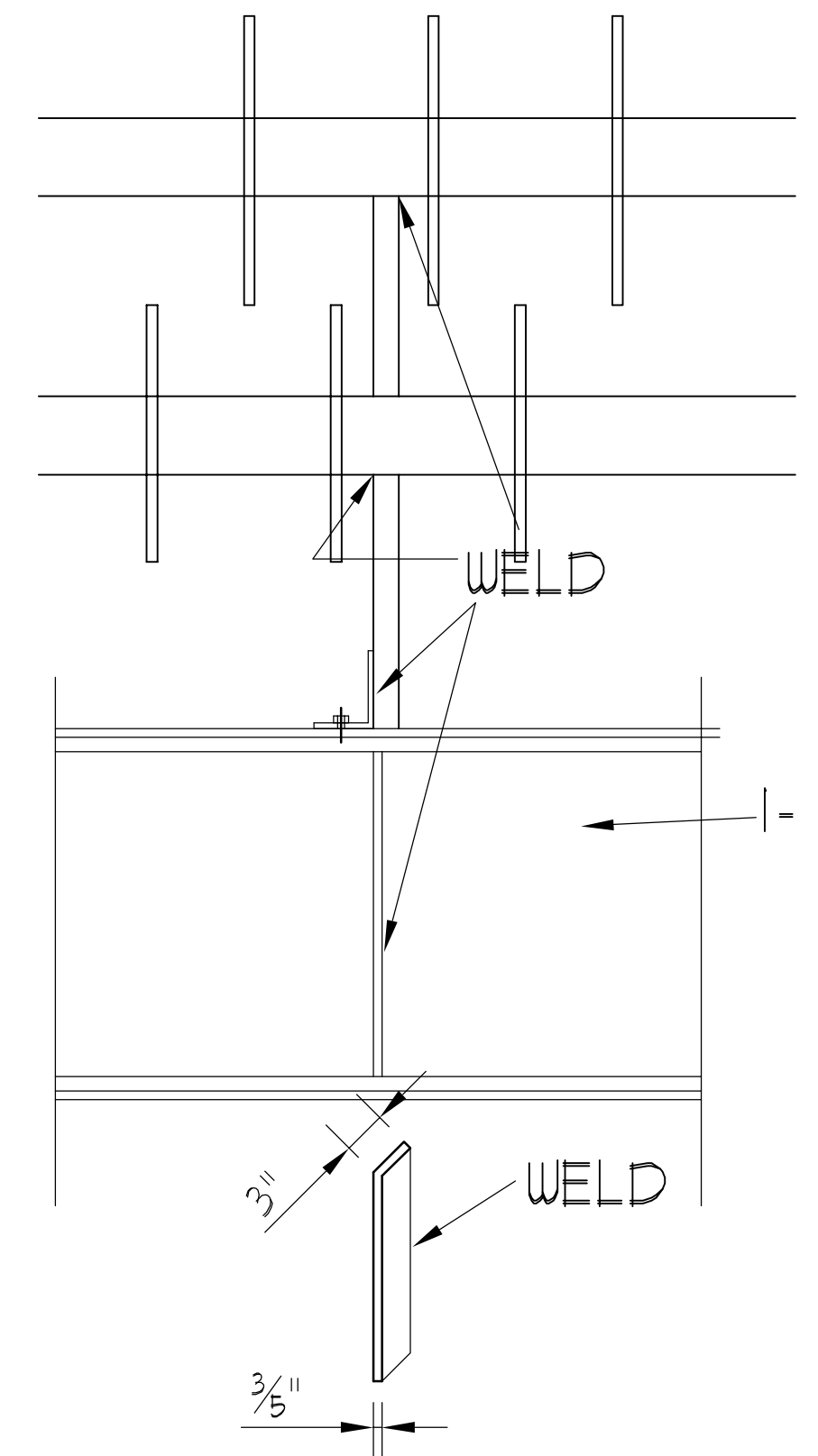
Ø3 PIN RAIL FRAMING  
SCALE: 1"=1'-0"



Ø2 HEAD STEEL  
SCALE: 1 1/2"=1'-0"



Ø3 PIN RAIL FRAMING



Ø4 CONNECTIONS AT THE PIN RAIL

FIELD DOCUMENTATION OF "AS-IS" CONDITIONS NOT FOR CONSTRUCTION

KILLIS ALMOND & ASSOCIATES  
Architecture Historic Preservation Planning  
342 WILKENS, SAN ANTONIO, TEXAS 78210  
(210) 532-3212 FAX (210) 532-9919

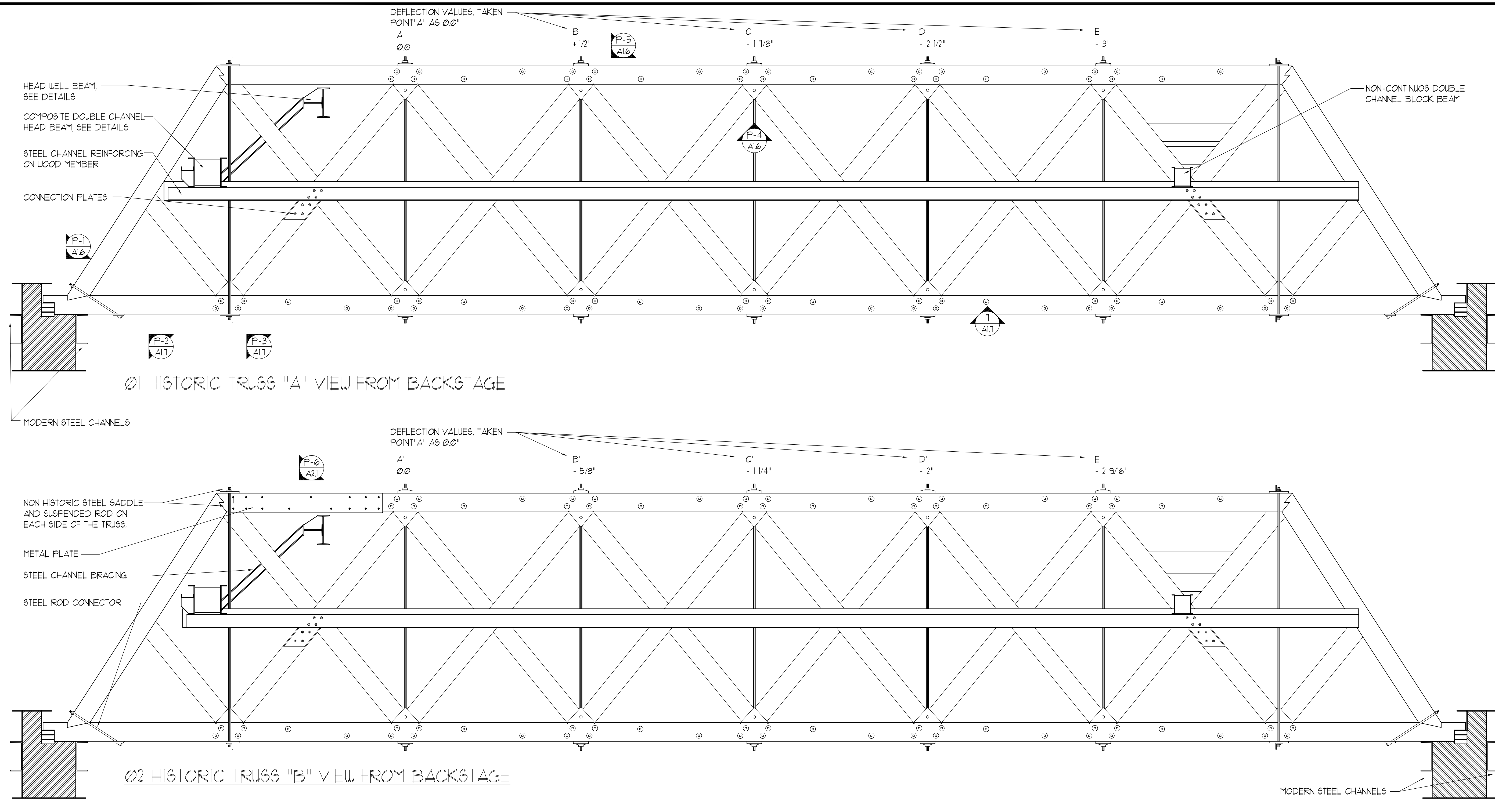
THE GRAND 1894 OPERA HOUSE  
STAGE REMODELING  
2020 POST OFFICE STREET  
GALVESTON ISLAND, TEXAS 77550

DATE MARCH 07, 2005  
DRAWN BY MVA, FB  
CHECKED BY KPA  
PROJECT NUMBER 05-09

A1.6

SHEET OF





PICTURE 1  
HISTORIC TRUSS TO LOAD  
BEARING WALL CONNECTION



PICTURE 2  
UNDER SHOT OF THE BOTTOM CHORD  
WITH THE STEEL ROD CONNECTOR



PICTURE 3  
VIEW OF THE ADDED TENSION  
RODS AND THE SADDLE PLATE



PICTURE 4  
WEB TO TOP CHORD CONNECTION  
WITH THE METAL SEAT AND THE  
TENSION ROD VIEW



PICTURE 5  
VIEW OF THE TOP CHORD



PICTURE 6  
CONNECTOR BOLT, TYP.  
SOME OF THE BOLTS NEED TIGHTENING,  
SEE ENGINEERS NOTES.



PICTURE 7  
VIEW OF CONNECTOR BOLT, TYP.  
SOME OF THE BOLTS NEED TIGHTENING,  
SEE ENGINEERS NOTES.

FIELD DOCUMENTATION OF "AS-IS" CONDITIONS NOT FOR CONSTRUCTION

THE GRAND 1894 OPERA HOUSE  
STAGE REMODELING

2020 POST OFFICE STREET  
GALVESTON ISLAND, TEXAS 77550

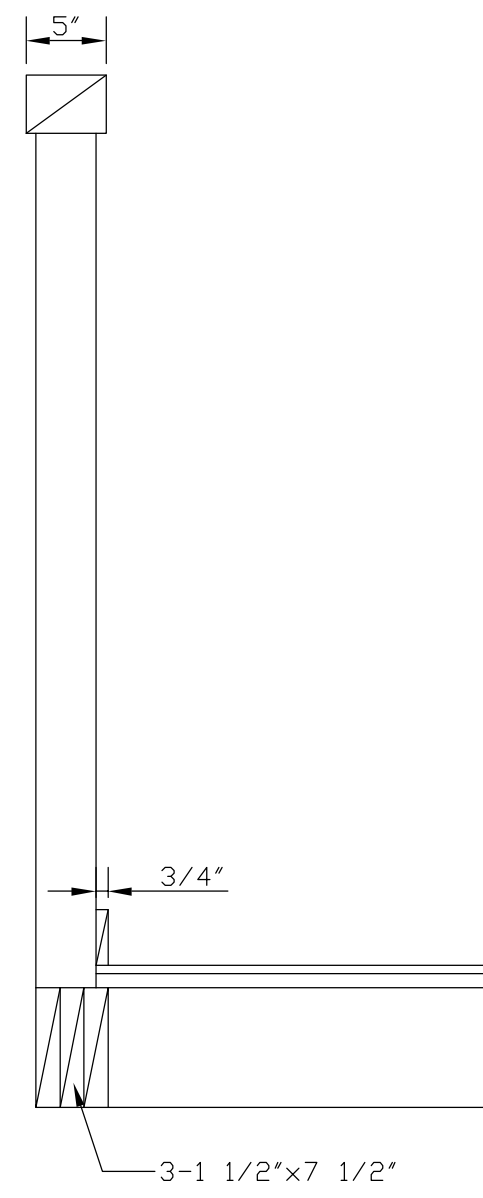
KILLIS ALMOND & ASSOCIATES  
Architecture Historic Preservation Planning  
342 WILKENS, SAN ANTONIO, TEXAS 78210  
(210) 532-3212 FAX (210) 532-9919

DATE MARCH 07, 2005  
DRAWN BY MVA, FB  
CHECKED BY KPA  
PROJECT NUMBER 05-09

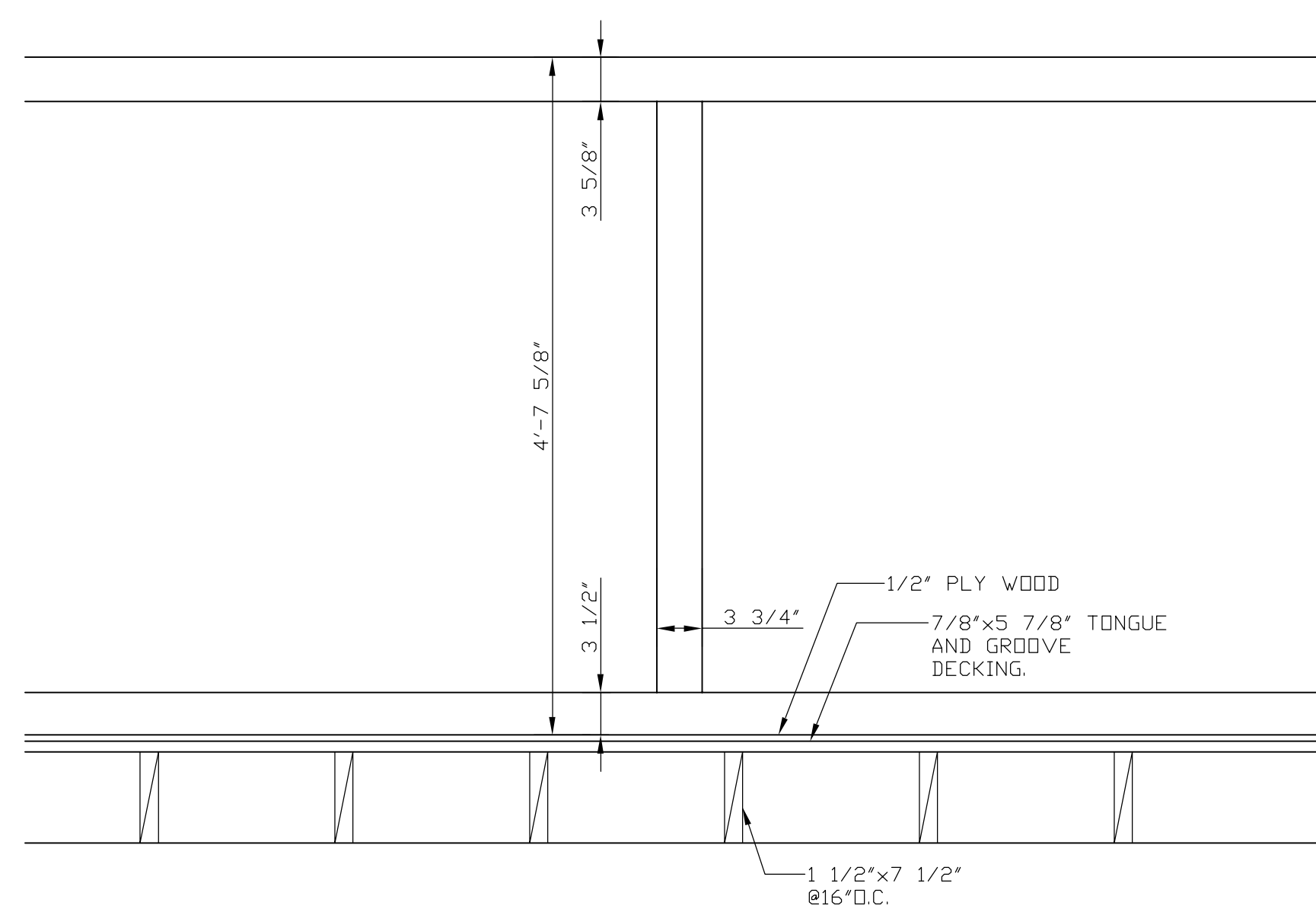
A1.5

SHEET OF

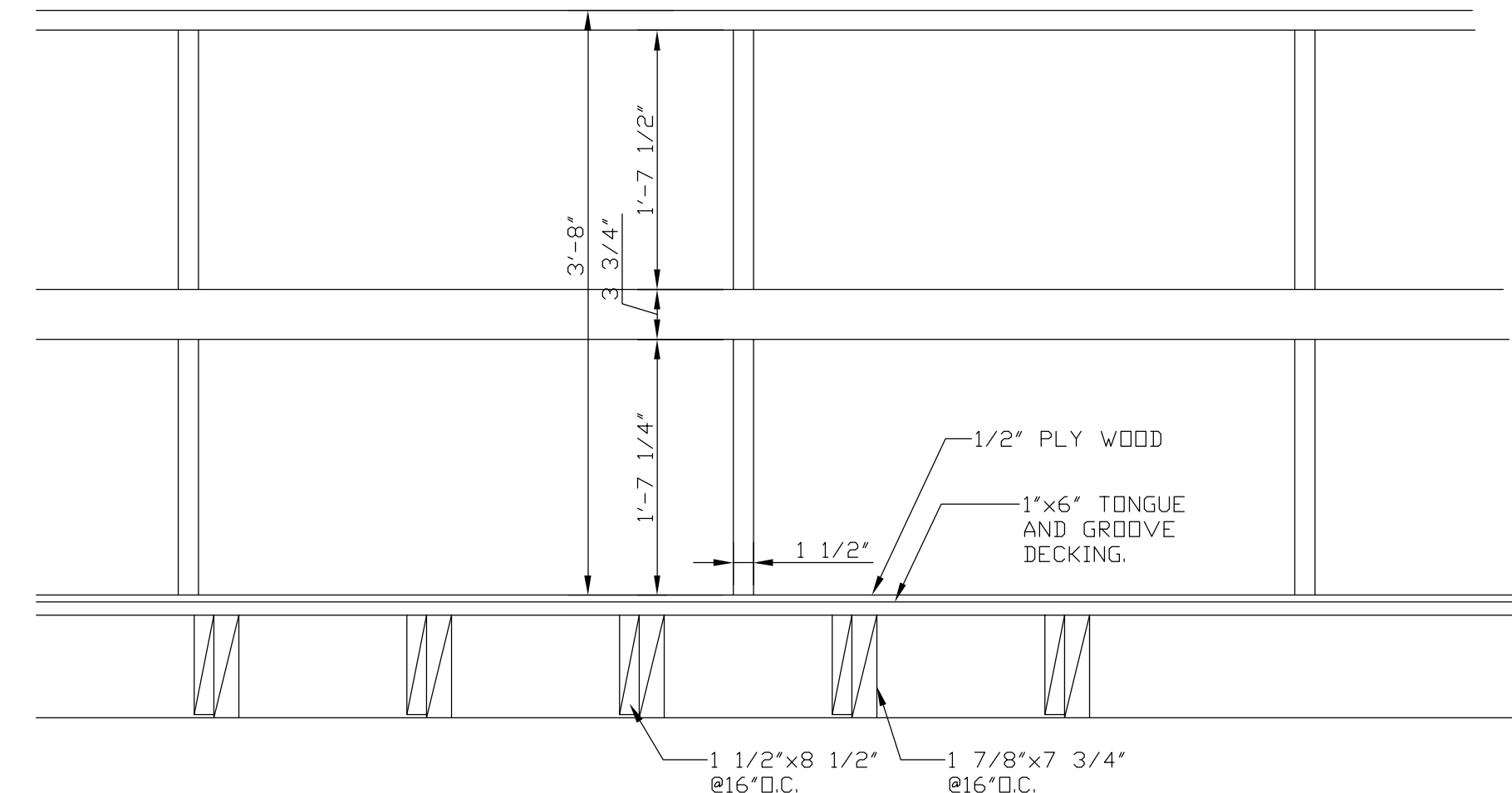




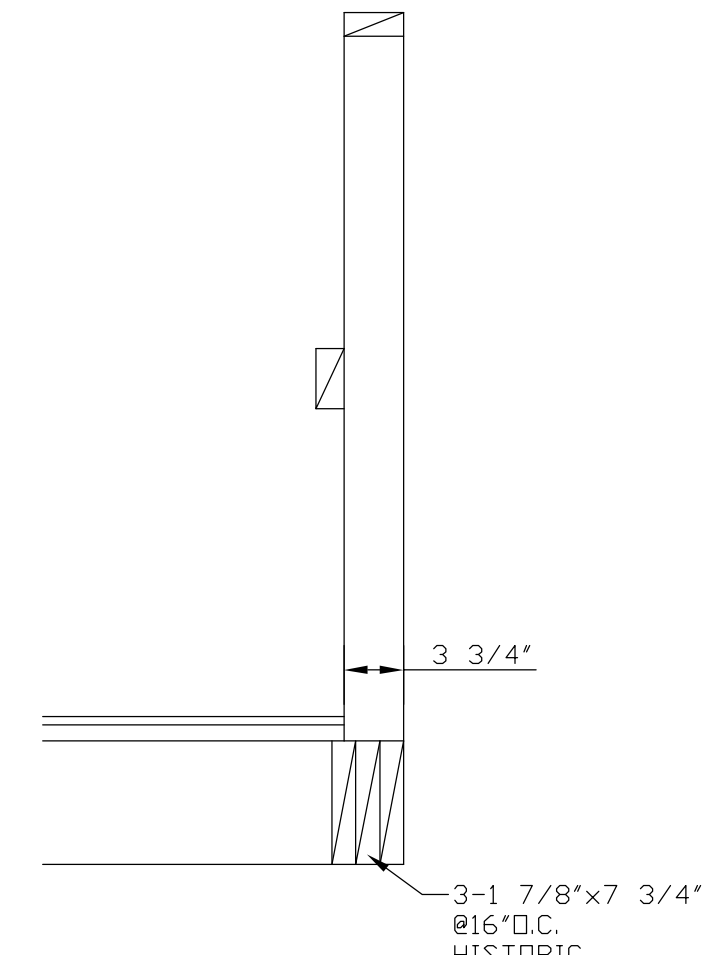
Ø1 RAIL AT STAGE RIGHT  
SCALE: 1"=1'-0"



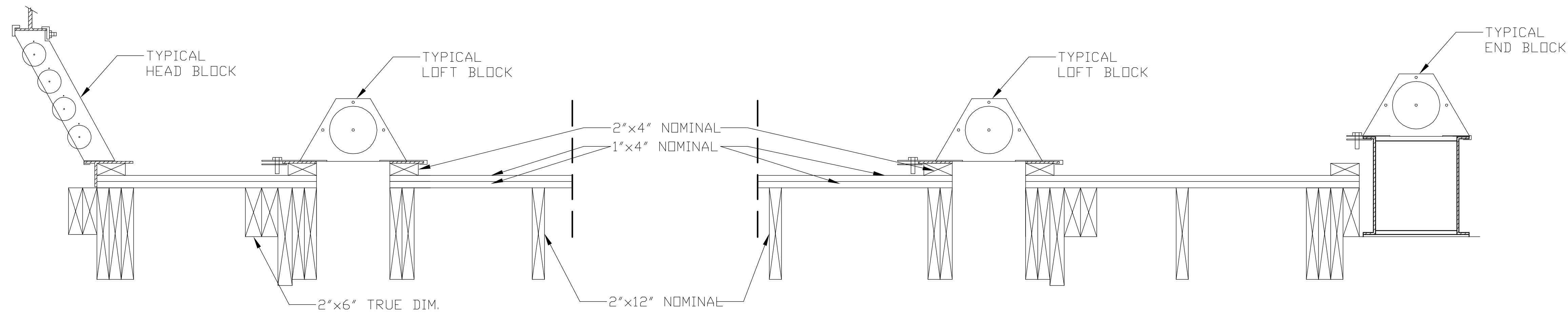
Ø2 FRAMING AT STAGE RIGHT  
SCALE: 1"=1'-0"



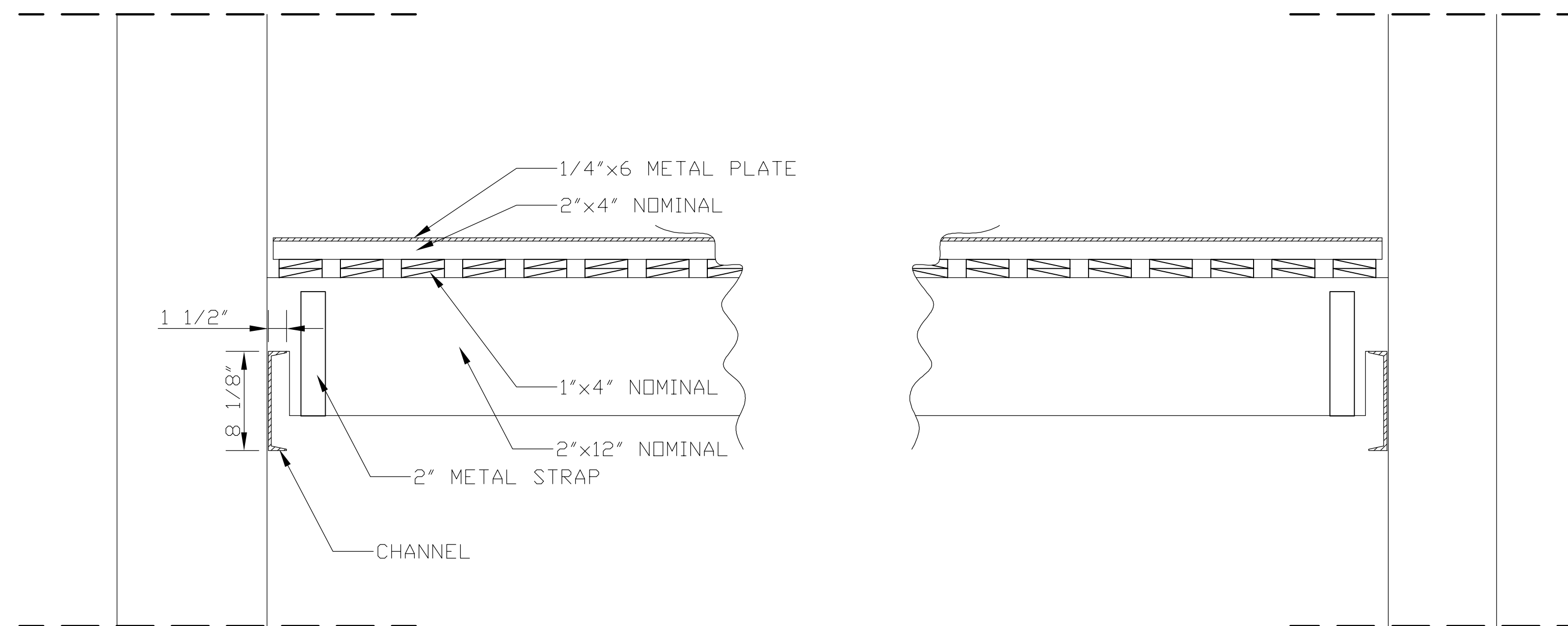
Ø3 FRAMING AT STAGE LEFT  
SCALE: 1"=1'-0"



Ø1 RAIL AT STAGE RIGHT  
SCALE: 1"=1'-0"



Ø5 SECTION AT GRIDIRON  
SCALE: NT.S.



Ø6 GRIDIRON FRAMING TO LOAD BEARING WALL CONECTIONS  
SCALE: NT.S.

FIELD DOCUMENTATION OF "AS-IS" CONDITIONS NOT FOR CONSTRUCTION

THE GRAND 1894 OPERA HOUSE  
STAGE REMODELING

2020 POST OFFICE STREET  
GALVESTON ISLAND, TEXAS 77550

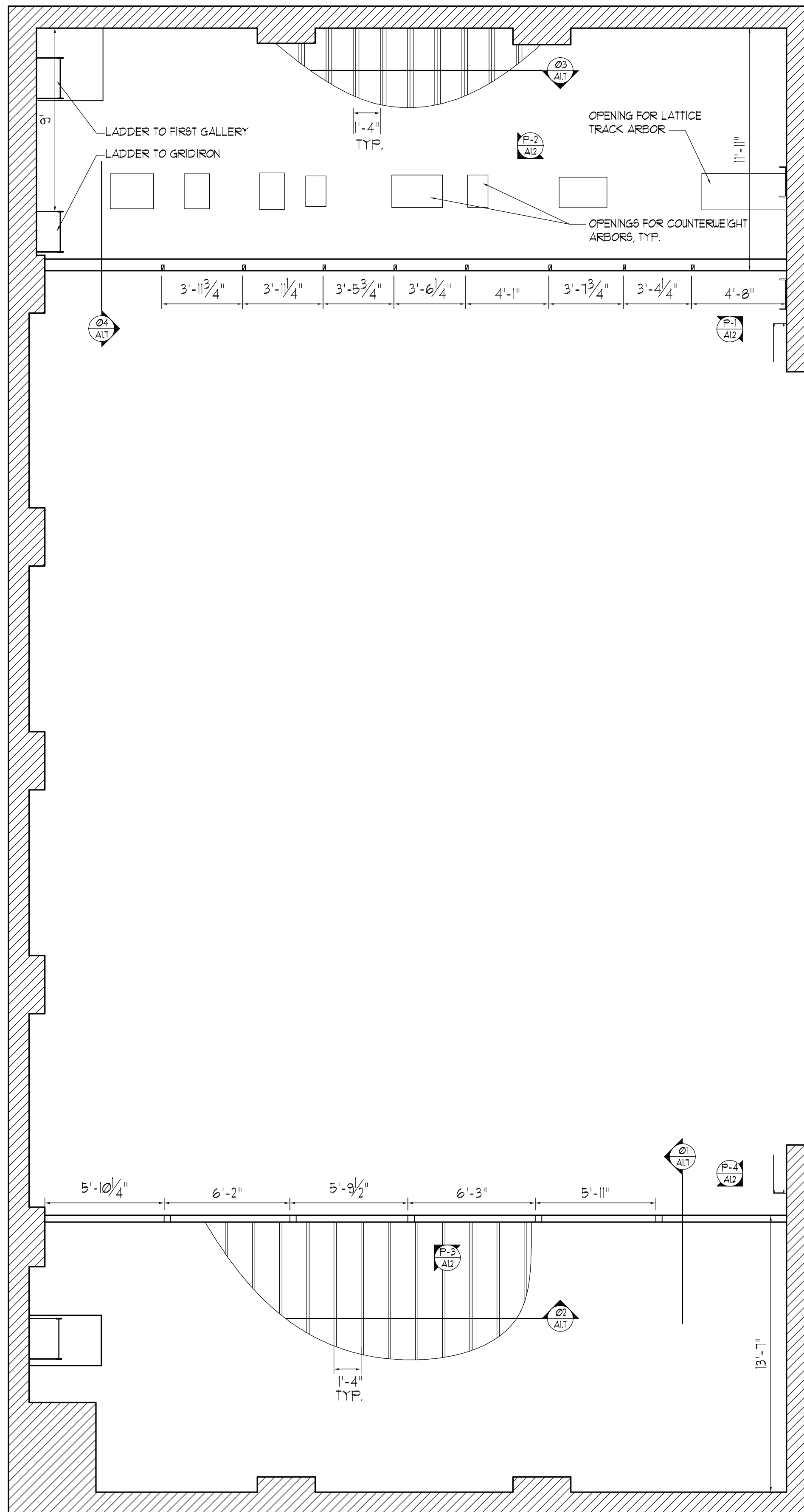
KILLIS ALMOND & ASSOCIATES  
Architecture Historic Preservation Planning  
342 WILKENS, SAN ANTONIO, TEXAS 78210  
(210) 532-3212 FAX (210) 532-9919

DATE  
MARCH 07, 2005  
DRAWN BY  
MVA, FB  
CHECKED BY  
KPA  
PROJECT NUMBER  
05-09

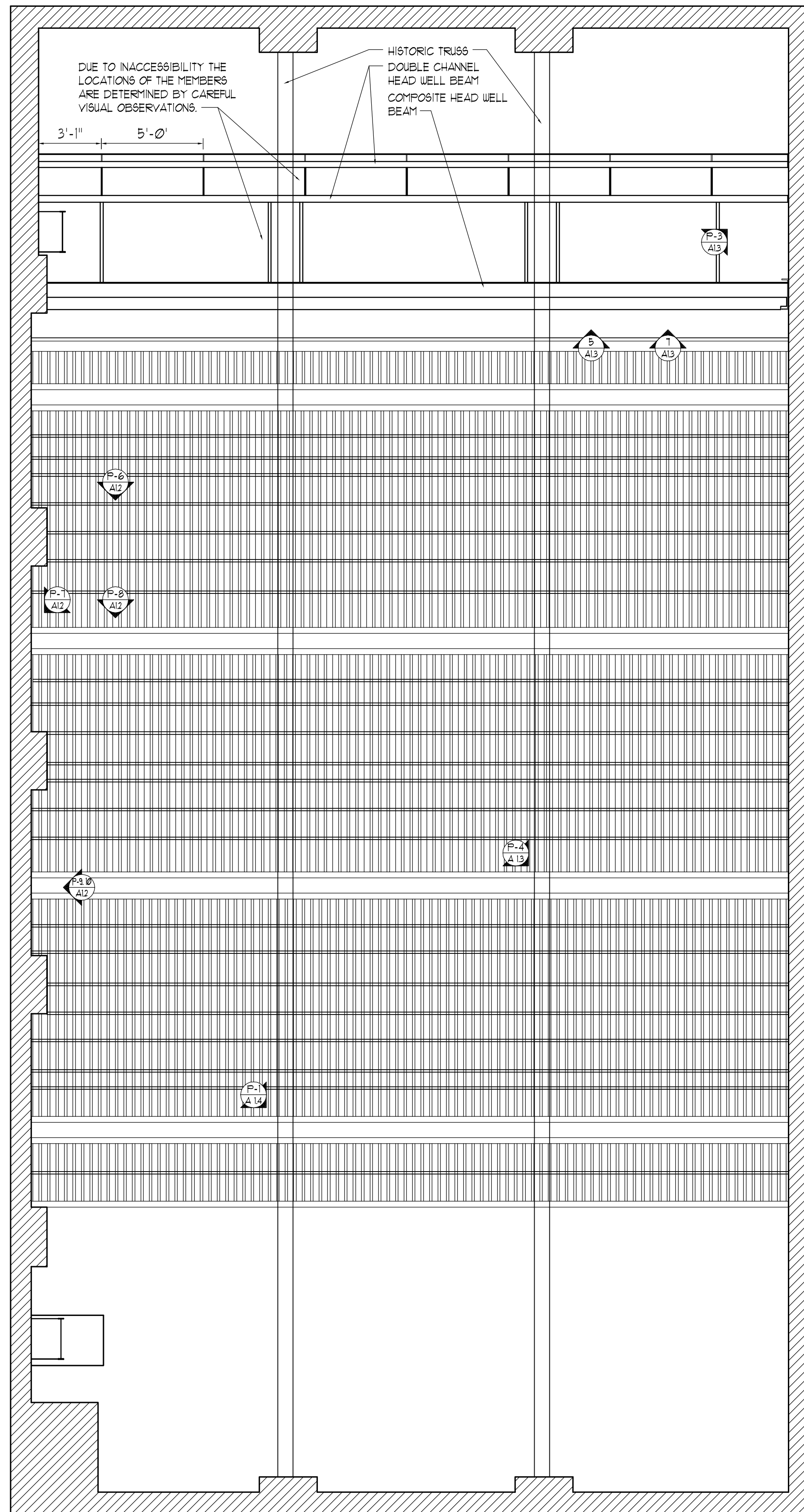
A1.7

SHEET OF





01 SECOND GALLERY PLAN  
SCALE: 1/4"=1'0"



02 GRIDIRON FRAMING PLAN  
SCALE: 1/4"=1'0"



PICTURE 1  
STAGE LEFT SECOND GALLERY FRAMING TO HISTORIC WALL CONNECTION.



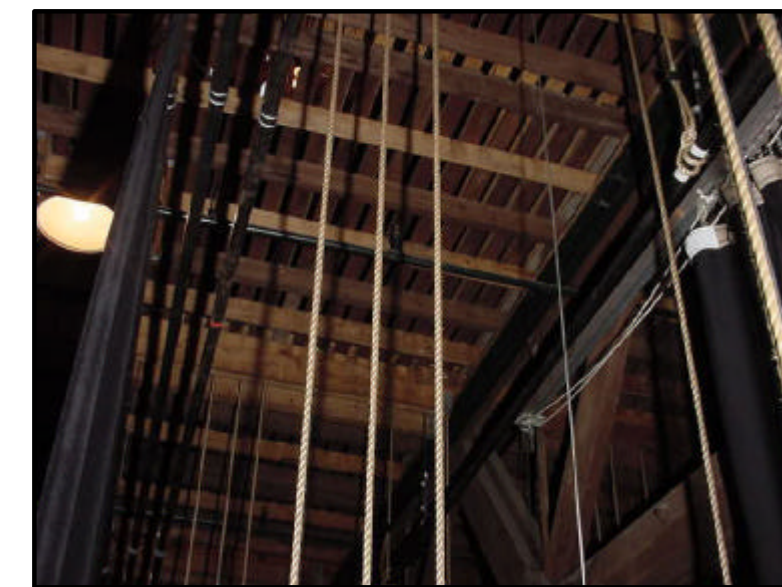
PICTURE 2  
STAGE LEFT SECOND GALLERY FRAMING.



PICTURE 3  
STAGE RIGHT SECOND GALLERY FRAMING.



PICTURE 4  
STAGE RIGHT HISTORIC HANDRAIL TO LOAD BEARING BRICK WALL CONNECTION.



PICTURE 5  
GRIDIRON FRAMING AROUND THE HISTORIC TRUSS



PICTURE 6  
GENERAL VIEW OF GRIDIRON



PICTURE 7  
GRIDIRON FRAMING TO BACK STAGE WALL CONNECTION



PICTURE 8  
GRIDIRON FRAMING AT THE LOFT WELL



PICTURE 9  
HEAD ON VIEW OF THE BACKSTAGE WALL CHANNEL SUPPORTING THE GRIDIRON FRAMING



PICTURE 10  
GRIDIRON TO BACK STAGE WALL CONNECTION, NOTE THE REMAINS OF OLD TIMBER RESTING IN THE WALL.

FIELD DOCUMENTATION OF "AS-IS" CONDITIONS NOT FOR CONSTRUCTION

THE GRAND 1894 OPERA HOUSE  
STAGE REMODELING

2020 POST OFFICE STREET  
GALVESTON ISLAND, TEXAS 77550

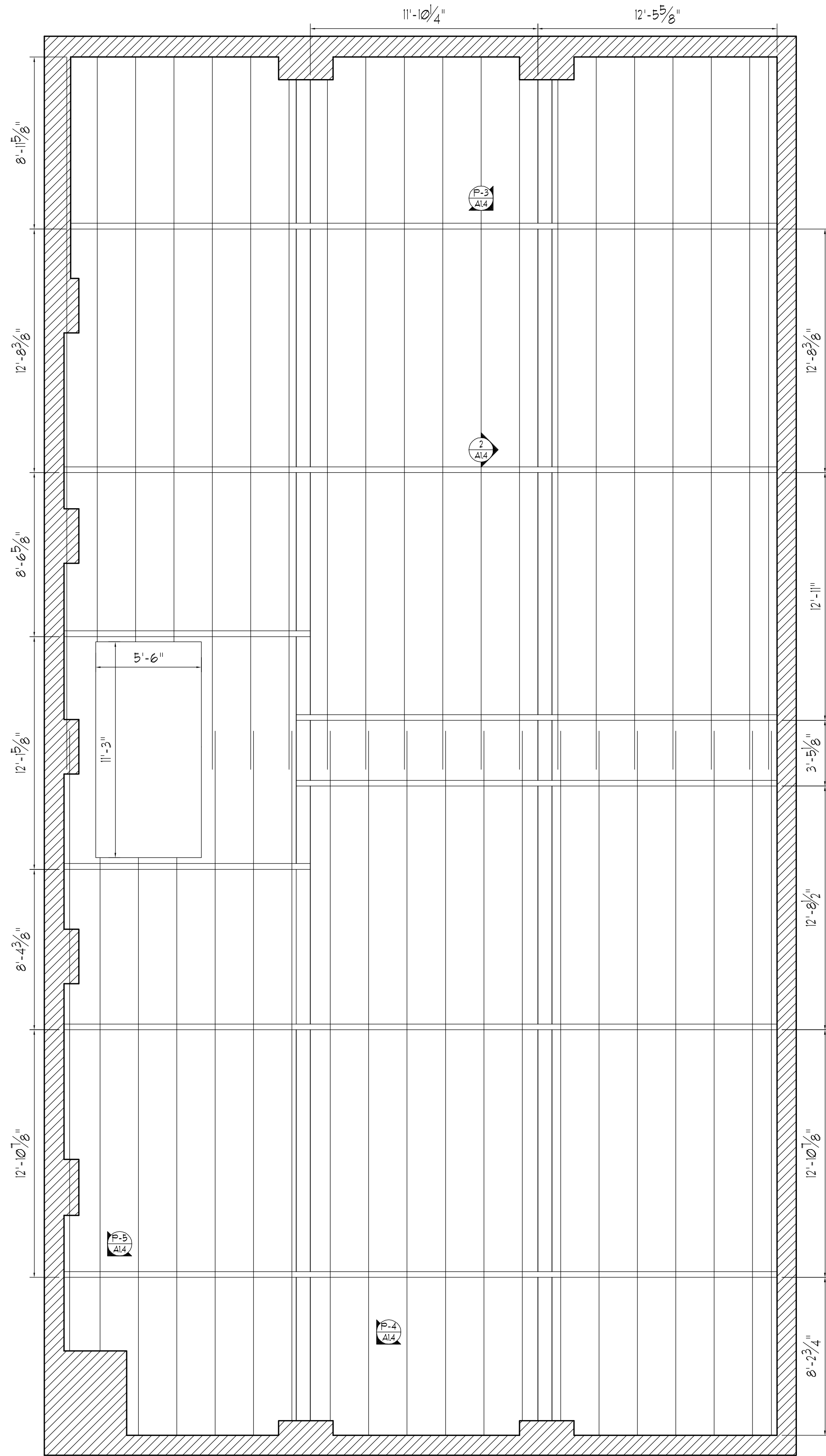
DATE MARCH 07, 2005  
DRAWN BY MVA, FB  
CHECKED BY KPA  
PROJECT NUMBER 05-09

A1.2

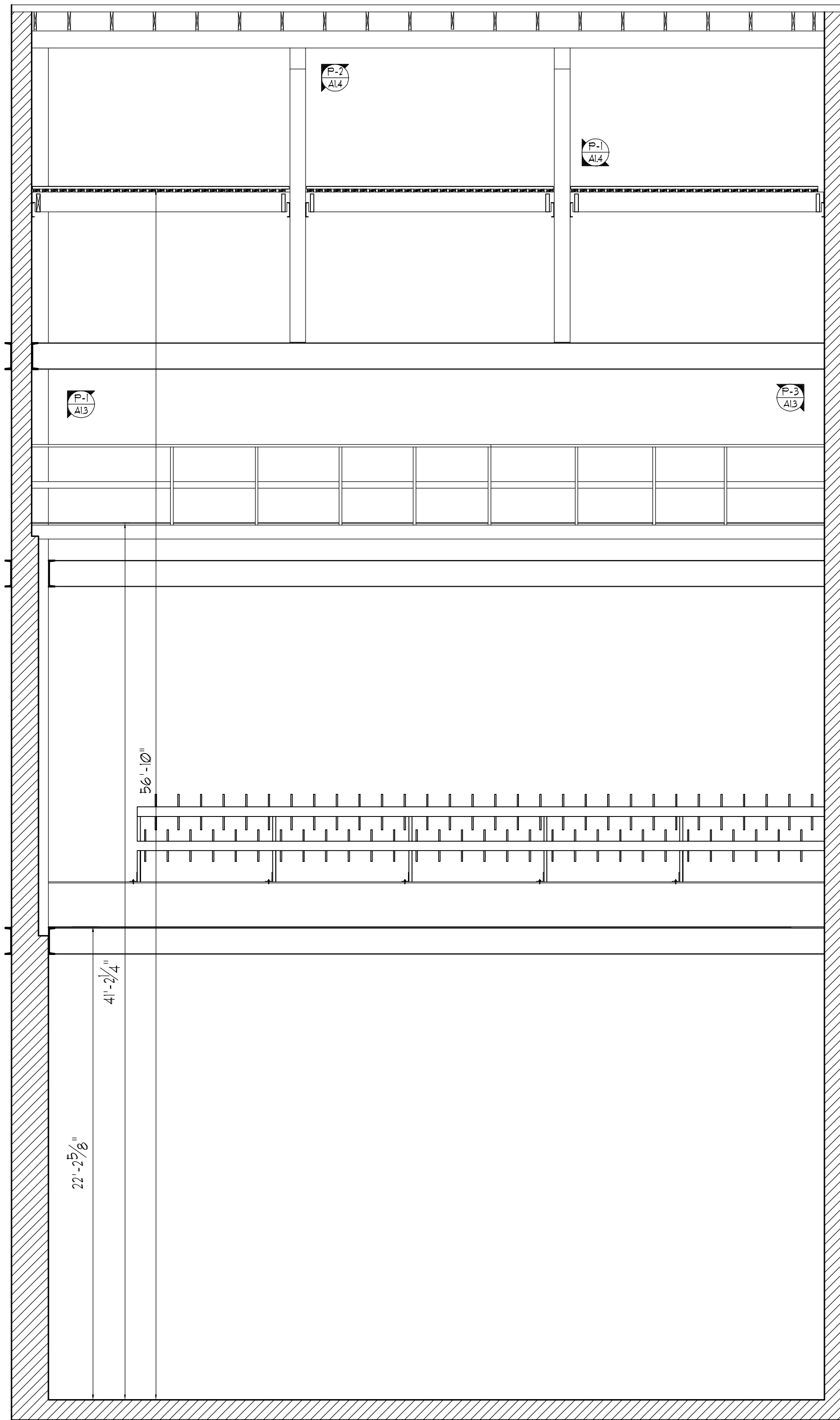
SHEET OF

KILLIS ALMOND & ASSOCIATES  
Architecture Historic Preservation Planning  
342 WILKENS, SAN ANTONIO, TEXAS 78210  
(210) 532-3212 FAX (210) 532-9919





Ø1 ROOF FRAMING PLAN  
SCALE: 1/4"=1'0"



Ø2 STAGE LEFT ELEVATION  
SCALE: 1/4"=1'0"



PICTURE 1  
DOUBLE CHANNEL HEAD BEAMS TO WALL  
CONNECTION AT BACK OF THE STAGE



PICTURE 3  
HEAD BEAMS TO THE STAGE FRONT WALL  
CHANNEL CONNECTION



PICTURE 5  
BLOCKS TO THE DOUBLE CHANNEL HEAD BEAM  
CONNECTION



PICTURE 7  
GENERAL VIEW OF HEAD BLOCKS



PICTURE 2  
MODERN STL. PLATE ON THE TOP CHORD OF  
THE HISTORIC TRUSS



PICTURE 4  
ADDITIONAL CHANNELS ON THE N-AXIS OF THE  
HISTORIC TRUSS AND THE DOUBLE CHANNEL  
BEAM SUPPORTING THE BLOCKS ON STAGE  
RIGHT



PICTURE 6  
CONNECTION OF STAGE FRONT CHANNEL TO THE  
HORIZONTAL MEMBER OF THE HEAD BEAM



PICTURE 8  
CONNECTION OF STAGE FRONT CHANNEL TO THE  
VERTICAL MEMBER OF THE HEAD BEAM

FIELD DOCUMENTATION OF "AS-IS" CONDITIONS NOT FOR CONSTRUCTION

THE GRAND 1894 OPERA HOUSE  
STAGE REMODELING

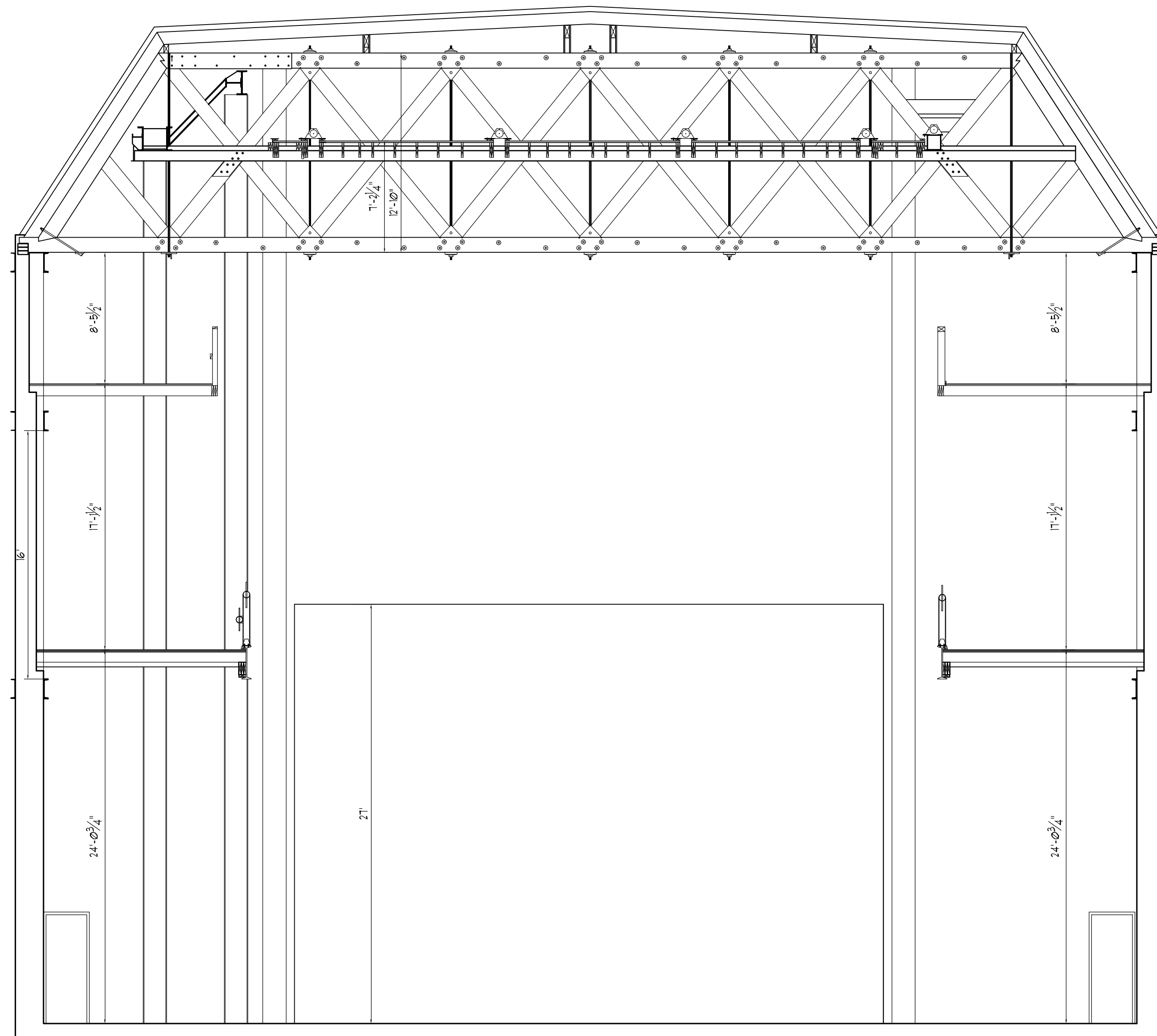
2020 POST OFFICE STREET  
GALVESTON ISLAND, TEXAS 77550

KILLIS ALMOND & ASSOCIATES  
Architecture Historic Preservation Planning  
342 WILKENS, SAN ANTONIO, TEXAS 78210  
(210) 532-3212 FAX (210) 532-9919

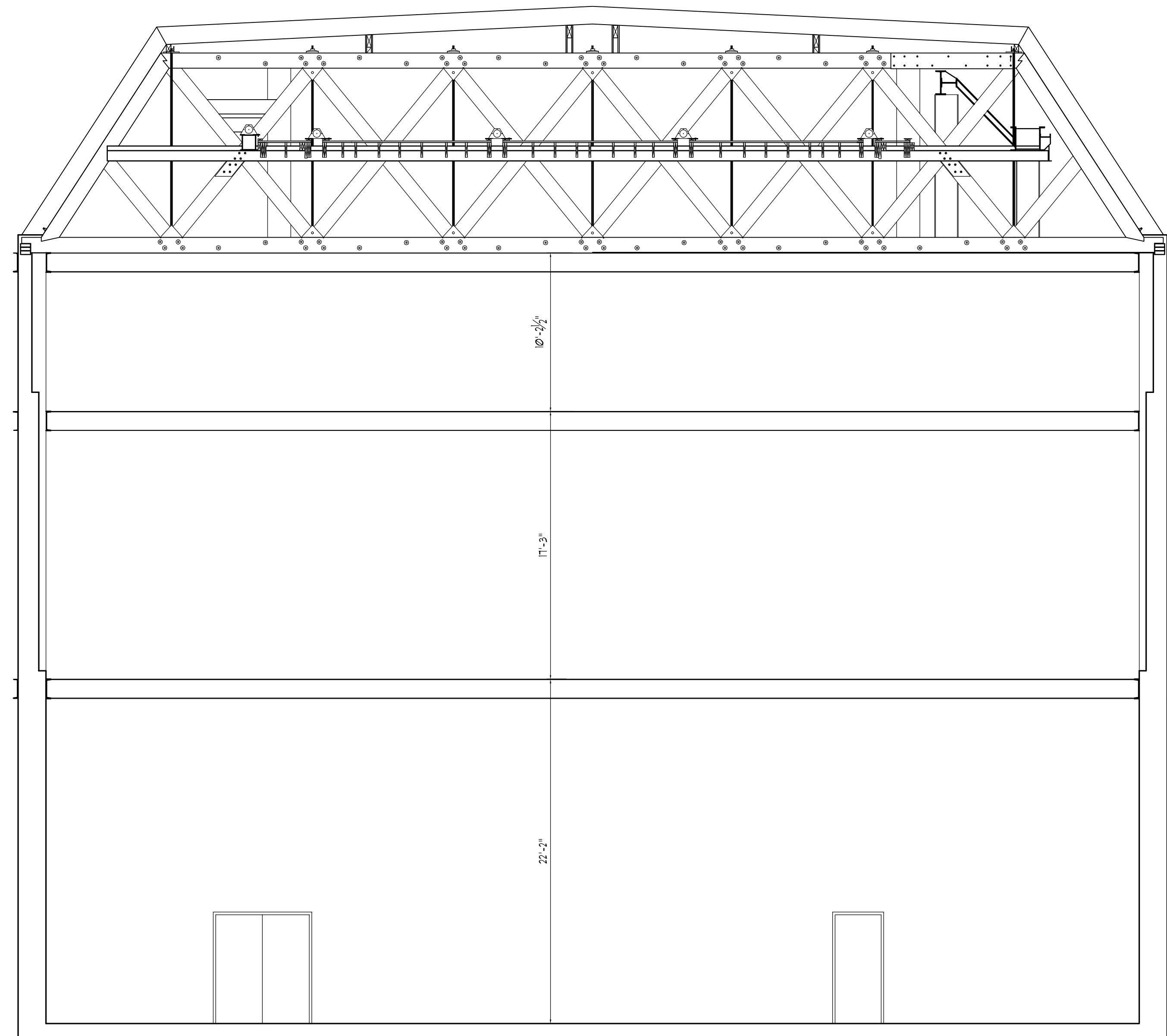
DATE MARCH 07, 2005  
DRAWN BY MVA, FB  
CHECKED BY KPA  
PROJECT NUMBER 05-09

A1.3  
SHEET OF





Ø1 SECTIONAL VIEW TOWARDS PROSCENIUM ARCH  
SCALE: 1/4"=1'-0"



Ø2 SECTIONAL VIEW TOWARDS BACK OF STAGE  
SCALE: 1/4"=1'-0"



PICTURE 1  
TOP VIEW OF THE CONDITION EXPLAINED ON  
PICTURE 6



PICTURE 2  
HISTORIC ROOF RAFTERS ON THE PURLIN



PICTURE 3  
BOTTOM VIEW OF THE CONDITION EXPLAINED ON  
PICTURE 4 @ A13



PICTURE 4  
ROOF RAFTERS ON THE STAGE RIGHT



PICTURE 5  
HISTORIC ROOF PURLIN TO WALL CONNECTION



PICTURE 6  
HISTORIC BRICK



PICTURE 7  
HISTORIC BRICK

FIELD DOCUMENTATION OF "AS-IS" CONDITIONS NOT FOR CONSTRUCTION

THE GRAND 1894 OPERA HOUSE  
STAGE REMODELING

2020 POST OFFICE STREET  
GALVESTON ISLAND, TEXAS 77550

KILLIS ALMOND & ASSOCIATES  
Architecture Historic Preservation Planning  
342 WILKENS, SAN ANTONIO, TEXAS 78210  
(210) 532-3212 FAX (210) 532-9919

DATE MARCH 07, 2005  
DRAWN BY MVA, FB  
CHECKED BY KPA  
PROJECT NUMBER 05-09

A1.4

SHEET OF